



COVID-19 in Central West London:
How the pandemic has impacted
Black, Asian and Minority Ethnic
people in Kensington and Chelsea

Easy Read
document

Introduction

We are a group called Healthwatch Central West London.



We work with others to make health care better for you.



We asked local people “how have you been affected by “**Coronavirus (COVID-19)**?”



We asked everyone, not just people who have had COVID-19.



If people feel **worried, sad, lonely or stressed**, because of Coronavirus, then we listen to their experiences as well.



Introduction

For this document, we wanted to share the experiences of people who are **Black, Asian or Minority Ethnic (BAME)**.



These experiences were shared with us in our COVID-19 survey.



12 people who completed our survey said that they are **Black, Asian or Minority Ethnic (BAME)**.



5 people who shared their experiences were Black/Black British.
4 people were mixed race.
1 person was Asian/Asian British.
1 person was Arab.
1 person wrote "Other."



What we asked

We asked people some questions about how COVID-19 had made them feel.



1. We asked how their **access to health and social care services** had been affected.

For example, **did they have appointments or care cancelled?**



2. We asked how their **mental wellbeing** had been affected.



What we asked

3. We asked how their **relationships** had been affected.



4. We asked how their **finances** had been affected.



5. We asked if **information** about COVID-19 had been **easy to find** and **easy to understand**.



What people told us

We asked how people's access to health and social care services had been affected by COVID-19.

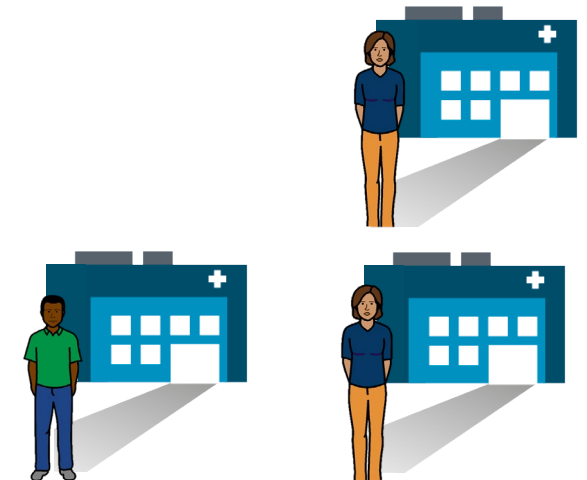
3 out of the 12 people who said they were BAME had received a shielding letter. **However, they had not registered for support.**



More people who said they were BAME said they were on the **shielding list** than people who said they were White.



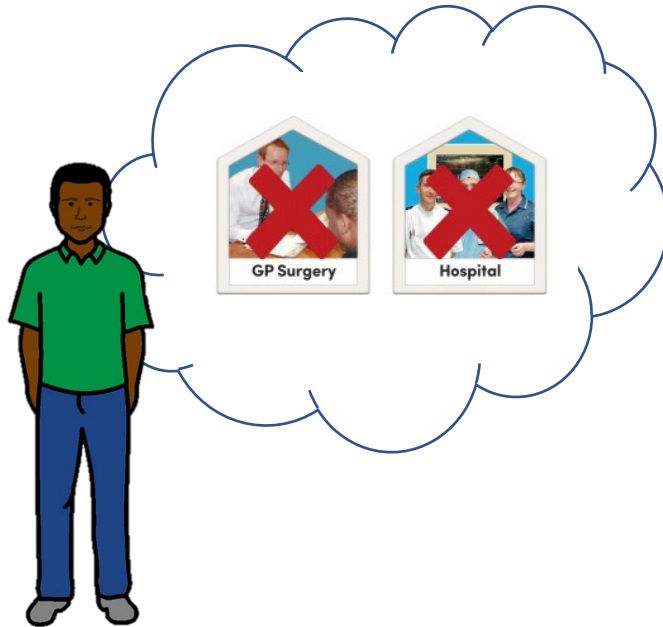
People who said they were BAME were half as likely to go to the GP than people who said they were White.



What people told us

We asked how people's access to health and social care services had been affected by COVID-19.

People who said they were BAME were more likely to delay having treatment. 5 out of 12 people said this.



The 1 person who said they have a long term condition accesses appointments online. They went to blood test appointments.



3 people were parents of small children.
2 people had mental health conditions.
1 person had a long term health condition.



What people told us

We asked how people's mental health had been affected by COVID-19.

5 people who said they were BAME said that their mental wellbeing had changed 'a lot.'



People who said they were BAME said that thinking about leaving their house or catching the infection was making them feel **stressed**.



More people who said they were BAME experienced negative changes to their mental health than the number of people who said they were White.



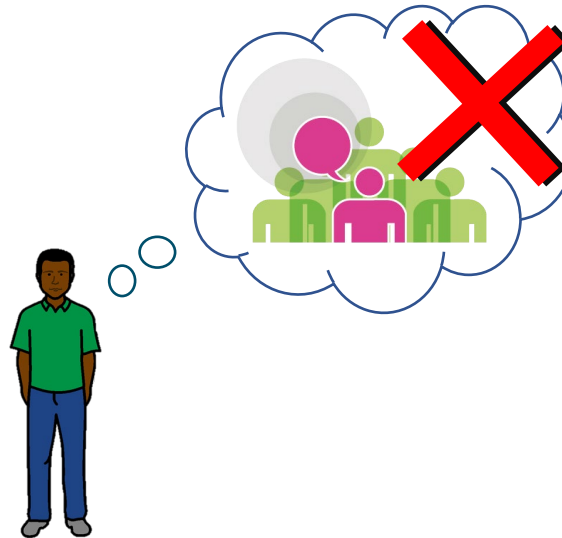
What people told us

We asked how people's **relationships** had been affected by COVID-19.

People said they stayed in touch with their friends and family by texting, speaking on social media and having video meetings (such as Zoom).



People who said they were BAME were not as well connected with neighbours and the wider community as people who said they were White.



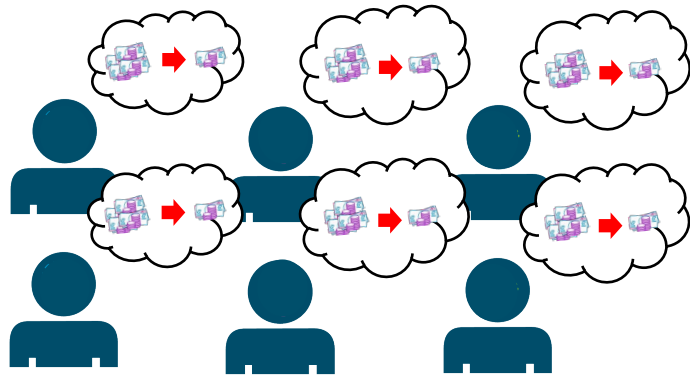
People are missing seeing their family and friends.



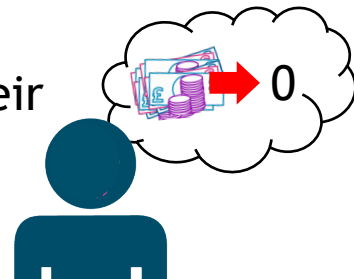
What people told us

We asked how people's finances had been affected by COVID-19.

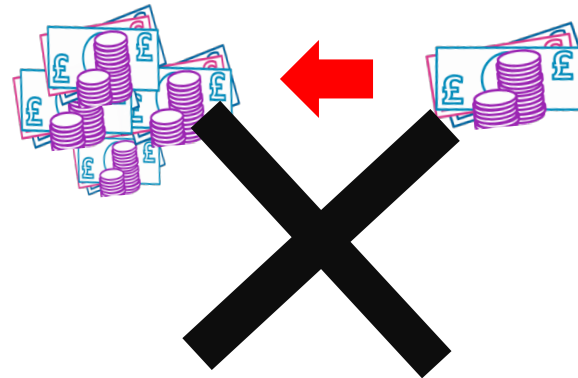
6 people out of the 12 people who said they were BAME said that they had less money because of COVID-19.



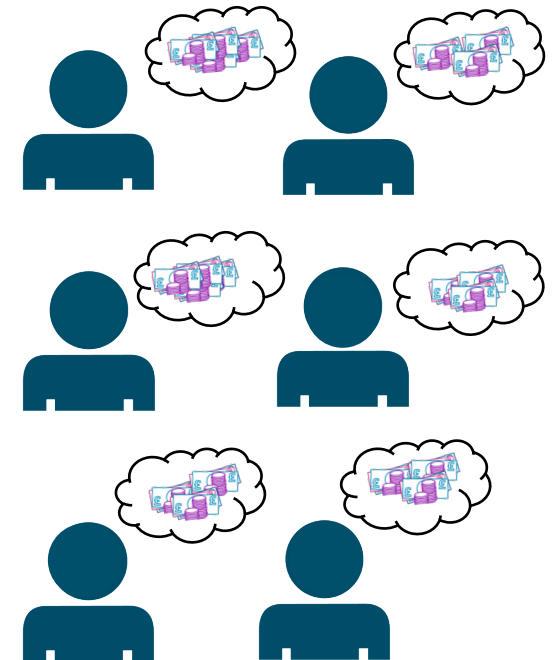
Some had lost all of their income.



Nobody who said they were BAME said they had more money since COVID-19.



6 people who said they were BAME said there was no change to their finances.



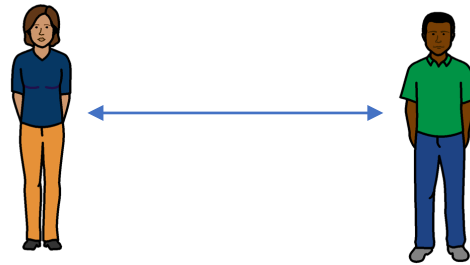
What people told us

We asked if information about COVID-19 had been **easy to find** and **easy to understand**.

Most of the people who said they were BAME said that COVID-19 information was **easy** to understand.



Most of the people who said they were White said it **was easy** to understand.



5 people out of 12 found it **easy to social distance**.



More people who said they were BAME said it was difficult to keep a safe distance from others than people who said they were White.

